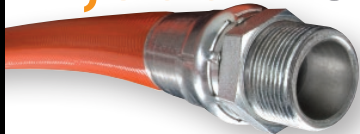


Piranha® "Ready-To-Go" Stock Length Hose Assemblies, Sewer Fittings & Swage Equipment/Tooling

New Assemblies!
Our newest hose assemblies and fittings are highlighted in yellow below as of October 14, 2019

2,500 PSI



3,000 PSI



4,000 PSI



4,000 PSI



5,000 PSI



SPOR Series - Orange Cover

Part Number	Size Code	Hose ID (in)	Male NPTF Nom. Thread Size	Working Press. (Max. psi)	Assembled Length (ft)	Wt. Per Pkg. (lbs)
SPOR-MM12X400	12	3/4	3/4-14	2500	400	112
SPOR-MM12X500	12	3/4	3/4-14	2500	500	140
SPOR-MM12X600	12	3/4	3/4-14	2500	600	168
SPOR-MM12X800	12	3/4	3/4-14	2500	800	224
SPOR-MM16X200	16	1	1-11 1/2	2500	200	80
SPOR-MM16X300	16	1	1-11 1/2	2500	300	120
SPOR-MM16X400	16	1	1-11 1/2	2500	400	160
SPOR-MM16X500	16	1	1-11 1/2	2500	500	200
SPOR-MM16X600	16	1	1-11 1/2	2500	600	240
SPOR-MM16X600WR	16	1	1-11 1/2	2500	600	240
SPOR-MM16X700	16	1	1-11 1/2	2500	700	280
SPOR-MM16X800	16	1	1-11 1/2	2500	800	320
SPOR-MM16X900	16	1	1-11 1/2	2500	900	370
SPOR-MM16x1000	16	1	1-11 1/2	2500	1,000	400
SPOR-MM20X400	20	1 1/4	1 1/4 - 11 1/2	2500	400	241
SPOR-MM20X500	20	1 1/4	1 1/4 - 11 1/2	2500	500	295
SPOR-MM20X600	20	1 1/4	1 1/4 - 11 1/2	2500	600	354
SPOR-MM20X800	20	1 1/4	1 1/4 - 11 1/2	2500	800	482

SLSPOR Series - Orange Cover

Part Number	Size Code	Hose ID (in)	Male NPTF Nom. Thread Size	Working Press. (Max. psi)	Assembled Length (ft)	Wt. Per Pkg. (lbs)
SLSPOR-MM12X400	12	3/4	3/4-14	2500	400	112
SLSPOR-MM12X500	12	3/4	3/4-14	2500	500	140
SLSPOR-MM16X400	16	1	1 - 11 1/2	2500	400	160
SLSPOR-MM16X500	16	1	1 - 11 1/2	2500	500	200
SLSPOR-MM20X500	20	1 1/4	1 1/4 - 11 1/2	2500	500	295

HPBU Series - Blue Cover

Part Number	Size Code	Hose ID (in)	Male NPTF Nom. Thread Size	Working Press. (Max. psi)	Assembled Length (ft)	Wt. Per Pkg. (lbs)
HPBU-MF12X20	12	3/4	3/4-14	3000	20	5
HPBU-MM12X400	12	3/4	3/4-14	3000	400	116
HPBU-MM12X500	12	3/4	3/4-14	3000	500	145
HPBU-MM12X600	12	3/4	3/4-14	3000	600	174
HPBU-MM12X800	12	3/4	3/4-14	3000	800	232
HPBU-MM16X500	16	1	1-11 1/2	3000	500	205
HPBU-MM16X500WR	16	1	1-11 1/2	3000	500	250
HPBU-MM16X600	16	1	1-11 1/2	3000	600	246
HPBU-MM16X700	16	1	1-11 1/2	3000	700	301
HPBU-MM16X800	16	1	1-11 1/2	3000	800	328
HPBU-MM16X800WR	16	1	1-11 1/2	3000	800	437

LLBU Series - Blue Cover

Part Number	Size Code	Hose ID (in)	Male NPTF Nom. Thread Size	Working Press. (Max. psi)	Assembled Length (ft)	Wt. Per Pkg. (lbs)
LLBU-MF08X200	08	1/2	1/2-14	3000	200	32
LLBU-MM08X200	08	1/2	1/2-14	3000	200	32
LLBU-MM08X300	08	1/2	1/2-14	3000	300	48
LLBU-MM08X500	08	1/2	1/2-14	3000	500	80

LLGR Series - Green Cover

Part Number	Size Code	Hose ID (in)	Male NPTF Nom. Thread Size	Working Press. (Max. psi)	Assembled Length (ft)	Wt. Per Pkg. (lbs)
LLGR-MM02X50	02	1/8	1/8-27	4000	50	2
LLGR-MM02X100	02	1/8	1/8-27	4000	100	4
LLGR-MM02X150	02	1/8	1/8-27	4000	150	6
LLGR-MM02X200	02	1/8	1/8-27	4000	200	8

Because we continually examine ways to improve our products, we reserve the right to alter specifications or discontinue products without prior notice.



Piranha® “Ready-To-Go” Stock Length Hose Assemblies, Sewer Fittings & Swage Equipment/Tooling



LLGR Series - Green Cover contd.

Part Number	Size Code	Hose ID (in)	Male NPTF Nom. Thread Size	Working Press. (Max. psi)	Assembled Length (ft)	Wt. Per Pkg. (lbs)
LLGR-MM02X250	02	1/8	1/8-27	4000	250	10
LLGR-MM03X150	03	3/16	3/16-18	4000	150	12
LLGR-MM04X100	04	1/4	1/4-18	4000	100	6
LLGR-MM04X150	04	1/4	1/4-18	4000	150	9
LLGR-MM04X200	04	1/4	1/4-18	4000	200	12
LLGR-MM04X250	04	1/4	1/4-18	4000	250	19
LLGR-MM04X300	04	1/4	1/4-18	4000	300	18
LLGR-MM04X500	04	1/4	1/4-18	4000	500	30
LLGR-MM06X100	06	3/8	3/8-18	4000	100	11
LLGR-MM06X150	06	3/8	3/8-18	4000	150	17
LLGR-MM06X200	06	3/8	3/8-18	4000	200	22
LLGR-MM06X250	06	3/8	3/8-18	4000	250	28
LLGR-MM06X300	06	3/8	3/8-18	4000	300	33
LLGR-MM06X500	06	3/8	3/8-18	4000	500	55
LLGR-MM08X100	08	1/2	1/2-14	4000	100	16
LLGR-MM08X150	08	1/2	1/2-14	4000	150	24
LLGR-MM08X200	08	1/2	1/2-14	4000	200	32
LLGR-MM08X300	08	1/2	1/2-14	4000	300	48
LLGR-MM08X400	08	1/2	1/2-14	4000	400	64
LLGR-MM08X500	08	1/2	1/2-14	4000	500	80
LLGR-MM08X600	08	1/2	1/2-14	4000	600	96
LLGR-MS04X200	04	1/4	1/4-18	4000	200	12
LLGR-MS06X50	06	3/8	3/8-18	4000	50	7
LLGR-MS06X100	06	3/8	3/8-18	4000	100	11
LLGR-MS06X150	06	3/8	3/8-18	4000	150	20
LLGR-MS06X200	06	3/8	3/8-18	4000	200	22
LLGR-MS06X250	06	3/8	3/8-18	4000	250	28
LLGR-MS06X300	06	3/8	3/8-18	4000	300	33
LLGR-MSMS06X300	06	3/8	3/8-18	4000	300	37
SLGR-MM02X250	02	1/8	1/8-27	4000	250	14
SLGR-MM04X250	04	1/4	1/4-18	4000	250	15
SLGR-MM04X300	04	1/4	1/4-18	4000	300	18
SLGR-MM06X250	06	3/8	3/8-18	4000	250	28
SLGR-MM06X300	06	3/8	3/8-18	4000	300	33
SLGR-MM08X200	08	1/2	1/2-14	4000	200	32
SLGR-MM08X500	08	1/2	1/2-14	4000	500	80

SHBK Series - Black Cover

Part Number	Size Code	Hose ID (in)	Male NPTF Nom. Thread Size	Working Press. (Max. psi)	Assembled Length (ft)	Wt. Per Pkg. (lbs)
SHBK-MM08X400	08	1/2	1/2-14	4000	400	80
SHBK-MM08X500	08	1/2	1/2-14	4000	500	100
SHBK-MM08X600	08	1/2	1/2-14	4000	600	120

LLRD Series - Red Cover

Part Number	Size Code	Hose ID (in)	Male NPTF Nom. Thread Size	Working Press. (Max. psi)	Assembled Length (ft)	Wt. Per Pkg. (lbs)
LLRD-MM04X50	04	1/4	1/4-18	5000	5	5
LLRD-MM04X100	04	1/4	1/4-18	5000	100	5
LLRD-MM04X150	04	1/4	1/4-18	5000	200	8
LLRD-MM04X200	04	1/4	1/4-18	5000	200	10
LLRD-MM04X300	04	1/4	1/4-18	5000	300	15
LLRD-MM04X600	04	1/4	1/4-18	5000	600	30





HOSE PRODUCTS, INC.
A Kuriyama Group Company

LLRD Series - Red Cover contd.

Part Number	Size Code	Hose ID (in)	Male NPTF Nom. Thread Size	Working Press. (Max. psi)	Assembled Length (ft)	Wt. Per Pkg. (lbs)
LLRD-MM06X100	06	3/8	3/8-18	5000	100	13
LLRD-MM06X150	06	3/8	3/8-18	5000	150	20
LLRD-MM06X200	06	3/8	3/8-18	5000	200	26
LLRD-MM06X300	06	3/8	3/8-18	5000	300	39
LLRD-MM06X600	06	3/8	3/8-18	5000	600	78
LLRD-MM08X10	08	1/2	1/2-14	5000	10	3
LLRD-MM08X300	08	1/2	1/2-14	5000	300	39
LLRD-MM08X500	08	1/2	1/2-14	5000	500	67
LLRD-MM08X600	08	1/2	1/2-14	5000	600	78

Because we continually examine ways to improve our products, we reserve the right to alter specifications or discontinue products without prior notice.

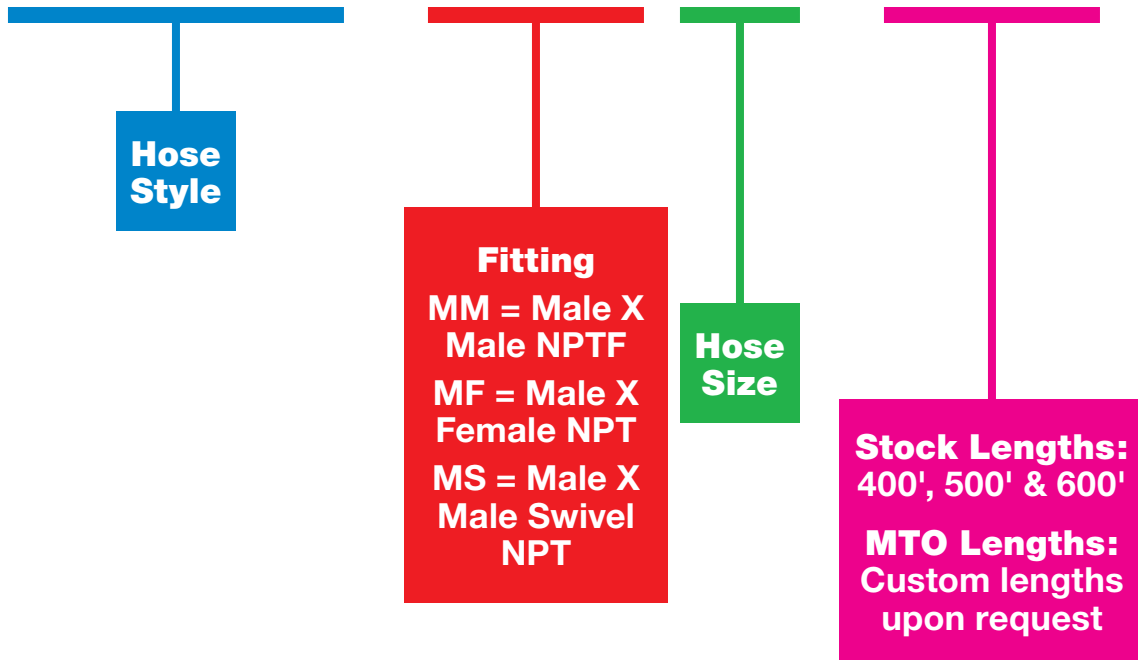


Kuriyama of America, Inc.

www.kuriyama.com

Assembly Custom Part Numbering System:

Example: SPOR-MM16X250



Please call, fax or email your inquiry to:

Phone:

(847) 755-0360

Fax:

(847) 885-0996

Email:

sales@kuriyama.com

Company Profile

Company Name _____ Contact _____

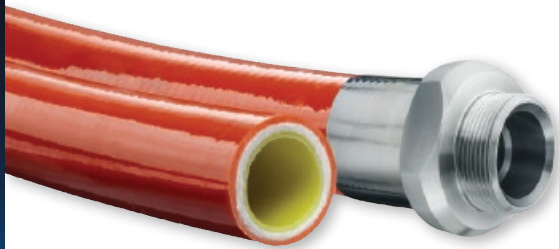
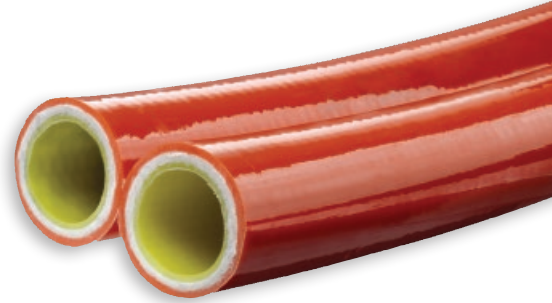
Address _____ City _____ State _____ Zip _____

Phone _____ Fax _____ E-mail _____

Custom Bonding Available

Piranha Twin-Line & Multi-Line Processes

- Bonding of hose sizes from 1/8" through 1 1/2" ID from available stocked hoses. Custom configurations available.
- For non-stock hose items, a minimum order of 2500 ft. is required for twin-line.
- Split-Back ends are provided; typically as lengths of 12", 18" or 24" for ease of coupling and assembly.
- Intermittent bonding can also be provided in lengths to meet your applications needs.
- Special packaging is available as required to meet your application needs.



Custom Twin and Multi-Line hoses are available on request and are made to order.

For more information contact Kuriyama of America, Inc.

Phone: (847) 755-0360 • Toll-free FAX: (800) 800-0320 • International FAX: (847) 885-0996

Web Site: www.kuriyama.com • E-Mail: sales@kuriyama.com



FEMALE ADAPTER FITTINGS

Hose ID (in)	Use With Hose Series	Female Adapter Part Number	Weight (lbs/each)
3/8	LLGR-06	A06FPX06FS	0.16
3/8	SLGR-06	A06FPX06FS	0.16
1/2	LAGR-08	A08FPX08FS	0.21
1/2	LHBK-08	A08FPX08FS	0.21
1/2	LLBU-08	A08FPX08FS	0.21
1/2	LLGR-08	A08FPX08FS	0.21
1/2	LLRD-08	A08FPX08FS	0.21
1/2	SHBK-08	A08FPX08FS	0.21
1/2	SLBU-08	A08FPX08FS	0.21
1/2	SLGR-08	A08FPX08FS	0.21
1/2	SLLHBK-08	A08FPX08FS	0.21
1/2	SLRD-08	A08FPX08FS	0.21
1/2	SLSHBK-08	A08FPX08FS	0.21
5/8	SAOR-10	A08FPX08FS	0.21
5/8	SHBK-10	A08FPX08FS	0.21
5/8	SLSHBK-10	A08FPX08FS	0.21
5/8	SLSPOR-10	A08FPX08FS	0.21
5/8	SPOR-10	A08FPX08FS	0.21
3/4	HPBU-12	A12FPX12FS	0.34
3/4	SLHPBU-12	A12FPX12FS	0.34
3/4	SLSPOR-12	A12FPX12FS	0.34
3/4	SPOR-12	A12FPX12FS	0.34



MALE SWIVEL FITTING

Hose ID (in)	Use With Hose Series	Male Swivel Part Number	Weight (lbs/each)
1/4	LLGR-04	F04MSNPT4	0.17
1/4	LLRD-04	F04MSNPT4	0.17
1/4	SLGR-04	F04MSNPT4	0.17
1/4	SLRD-04	F04MSNPT4	0.17
3/8	LLGR-06	F06MSNPT6	0.23
3/8	SLGR-06	F06MSNPT6	0.23
1/2	LHBK-08	F08MSNPT8	0.35
1/2	LLBU-08	F08MSNPT8	0.35
1/2	LLGR-08	F08MSNPT8	0.35
1/2	LLRD-08	F08MSNPT8	0.35
1/2	SLGR-08	F08MSNPT8	0.35

NOTE: THE USE OF FITTINGS AND ASSEMBLY TOOLING OTHER THAN THAT SUPPLIED BY PIRANHA HOSE PRODUCTS IS AT THE RISK AND LIABILITY OF THE USER.

Sewer & Lateral Line Hose Fittings

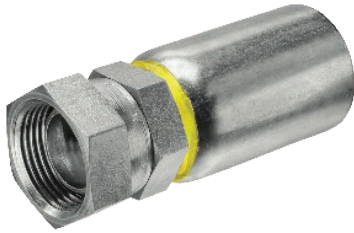


MALE FITTINGS

Hose ID (in)	Use With Hose Series	Male Part Number	Weight (lbs/each)
1/8	LLGR-02	F02NPT2	0.04
1/8	SLGR-02	F02NPT2	0.04
3/16X1/8	LLGR-03	F03NPT2	0.08
3/16X1/8	SLGR-03	F03NPT2	0.08
3/16X1/4	LLGR-03	F03NPT4	0.10
3/16X1/4	SLGR-03	F03NPT4	0.10
1/4	LLGR-04	F04NPT4	0.12
1/4	LLRD-04	F04NPT4	0.12
1/4	SLGR-04	F04NPT4	0.12
1/4	SLRD-04	F04NPT4	0.12
3/8	LLGR-06	F06NPT6	0.17
3/8	LLRD-06	FCP06NPT-NS	0.18
3/8	SLGR-06	F06NPT6	0.17
3/8	SLRD-06	FCP06NPT-NS	0.18
1/2	LAGR-08	FAR08NPT8	0.35
1/2	LHBK-08	F08NPT8	0.28
1/2	LLBU-08	F08NPT8	0.28
1/2	LLGR-08	F08NPT8	0.28
1/2	LLRD-08	F08NPT8	0.28
1/2	SHBK-08	FHP08NPT8	0.29
1/2	SLBU-08	F08NPT8	0.28
1/2	SLGR-08	F08NPT8	0.28
1/2	SLLHBK-08	F08NPT8	0.28
1/2	SLRD-08	F08NPT8	0.28
1/2	SLSHBK-08	FHP08NPT8	0.29
5/8	SHBK-10	FHP10NPT8	0.34
5/8	SLSHBK-10	FHP10NPT8	0.34
5/8	SLSPOR-10	F10NPT8	0.36
5/8	SPOR-10	F10NPT8	0.36
3/4	HABU-12	FAR12NPT12	0.50
3/4	HPBU-12	F12NPT12	0.43
3/4	SAOR-12	FAR12NPT12	0.50
3/4	SLHPBU-12	F12NPT12	0.43
3/4	SLSPOR-12	F12NPT12	0.43
3/4	SPOR-12	F12NPT12	0.43
1	HABU-16	FAR16NPT16	0.79
1	HPBU-16	F16NPT16	0.71
1	SAOR-16	FAR16NPT16	0.79
1	SLHPBU-16	F16NPT16	0.71
1	SLSPOR-16	F16NPT16	0.71
1	SPOR-16	F16NPT16	0.71
1 1/4	SAOR-20	FAR20NPT20	1.00
1 1/4	SLSPOR-20	F20NPT20	1.00
1 1/4	SPOR-20	F20NPT20	1.00

NOTE: THE USE OF FITTINGS AND ASSEMBLY TOOLING OTHER THAN THAT SUPPLIED BY PIRANHA HOSE PRODUCTS IS AT THE RISK AND LIABILITY OF THE USER.

Sewer & Lateral Line Hose Fittings



FEMALE FITTINGS

Hose ID (in)	Use With Hose Series	Female Part Number	Weight (lbs/each)
3/8	LLRD-06	FCP06FS	0.21
1/2	LAGR-08	FAR08FS8	0.39
1/2	LHBK-08	F08FS8	0.29
1/2	LLBU-08	F08FS8	0.29
1/2	LLGR-08	F08FS8	0.29
1/2	SHBK-08	FHP08FS8	0.30
1/2	SLBU-08	F08FS8	0.29
1/2	SLGR-08	F08FS8	0.29
1/2	SLLHBK-08	F08FS8	0.29
1/2	SLSHBK-08	FHP08FS8	0.30
3/4	HABU-12	FAR12FS12	0.60
3/4	HPBU-12	F12FS12	0.52
3/4	SAOR-12	FAR12FS12	0.60
3/4	SLHPBU-12	F12FS12	0.52
3/4	SLSPOR-12	F12FS12	0.52
3/4	SPOR-12	F12FS12	0.52
1	HABU-16	FAR16FS16	0.89
1	HPBU-16	F16FS16	0.81
1	SAOR-16	FAR16FS16	0.89
1	SLHPBU-16	F16FS16	0.81
1	SLSPOR-16	F16FS16	0.81
1	SPOR-16	F16FS16	0.81



MENDERS

Hose ID (in)	Use With Hose Series	Mender Part Number	Weight (lbs/each)
1/2	LAGR-08	FAR08MEND	0.40
1/2	LHBK-08	FLL08MEND	0.33
1/2	LLBU-08	FLL08MEND	0.33
1/2	LLGR-08	FLL08MEND	0.33
1/2	SHBK-08	F08MEND	0.36
1/2	SLBU-08	FLL08MEND	0.33
1/2	SLGR-08	FLL08MEND	0.33
1/2	SLLHBK-08	FLL08MEND	0.33
1/2	SLSHBK-08	F08MEND	0.36
5/8	SHBK-10	FA10MEND	0.45
5/8	SLSHBK-10	FA10MEND	0.45
5/8	SLSPOR-10	F10MEND	0.47
5/8	SPOR-10	F10MEND	0.47
3/4	HABU-12	FAR12MEND	0.64
3/4	HPBU-12	F12MEND	0.54
3/4	SAOR-12	FAR12MEND	0.64
3/4	SLHPBU-12	F12MEND	0.54
3/4	SLSPOR-12	F12MEND	0.54
3/4	SPOR-12	F12MEND	0.54
1	HABU-16	FAR16MEND	0.99
1	HPBU-16	F16MEND	0.73
1	SAOR-16	FAR16MEND	0.99
1	SLHPBU-16	F16MEND	0.73
1	SLSPOR-16	F16MEND	0.73
1	SPOR-16	F16MEND	0.73
1 1/4	SLSPOR-20	F20MEND	1.04
1 1/4	SPOR-20	F20MEND	1.04

NOTE: WHEN USING A MENDER, 2 DIE SETS ARE REQUIRED TO MEND A HOSE.

NOTE: THE USE OF FITTINGS AND ASSEMBLY TOOLING OTHER THAN THAT SUPPLIED BY PIRANHA HOSE PRODUCTS IS AT THE RISK AND LIABILITY OF THE USER.

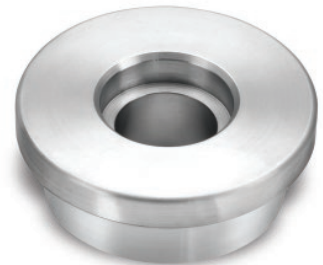
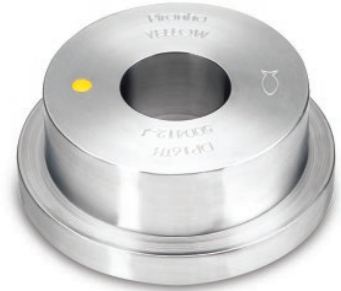


HOSE PRODUCTS, INC.
A Kuriyama Group Company

MALE PUSHERS

Hose ID (in)	Use With Hose Series	Male Part Number	Weight (lbs/each)
1/8	LLGR-02	DP02TH	2.33
1/8	SLGR-02	DP02TH	2.33
3/16	LLGR-03	DP02TH	2.33
3/16	SLGR-03	DP02TH	2.33
1/4	LLGR-04	DP04TH	2.33
1/4	LLRD-04	DP04TH	2.33
1/4	SLGR-04	DP04TH	2.33
1/4	SLRD-04	DP04TH	2.33
3/8	LLGR-06	DP06TH	2.33
3/8	SLGR-06	DP06TH	2.33
1/2	LAGR-08	DP08TH	2.19
1/2	LHBK-08	DP08TH	2.23
1/2	LLBU-08	DP08TH	2.23
1/2	LLGR-08	DP08TH	2.23
1/2	LLRD-08	DP08TH	2.23
1/2	SHBK-08	DP08TH	2.23
1/2	SLBU-08	DP08TH	2.23
1/2	SLGR-08	DP08TH	2.23
1/2	SLLHBK-08	DP08TH	2.23
1/2	SLRD-08	DP08TH	2.23
1/2	SLSHBK-08	DP08TH	2.23
5/8	SHBK-10	DP08TH	2.23
5/8	SLSHBK-10	DP08TH	2.23
5/8	SLSPOR-10	DP08TH	2.23
5/8	SPOR-10	DP08TH	2.23
3/4	HABU-12	DP12TH	2.07
3/4	HPBU-12	DP12TH	2.11
3/4	SAOR-12	DP12TH	2.07
3/4	SLHPBU-12	DP12TH	2.11
3/4	SLSPOR-12	DP12TH	2.11
3/4	SPOR-12	DP12TH	2.11
1	HABU-16	DP16TH	1.77
1	HPBU-16	DP16TH	1.81
1	SAOR-16	DP16TH	1.77
1	SLHPBU-16	DP16TH	1.81
1	SLSPOR-16	DP16TH	1.81
1	SPOR-16	DP16TH	1.81
1 1/4	SAOR-20	DP20TH	1.39
1 1/4	SLSPOR-20	DP20TH	1.66
1 1/4	SPOR-20	DP20TH	1.66

NOTE: ONE DIE SET AND A PUSHER ARE REQUIRED TO COMPLETE AN ASSEMBLY.



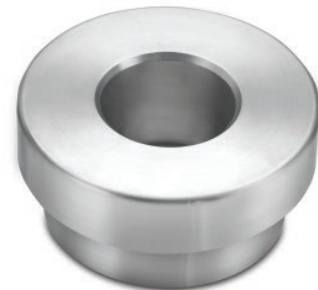
MALE SWIVEL PUSHERS

Hose ID (in)	Use With Hose Series	Male Part Number	Weight (lbs/each)
1/4	LLGR-04	DP04MSTH	4.03
1/4	LLRD-04	DP04MSTH	4.03
1/4	SLGR-04	DP04MSTH	4.03
1/4	SLRD-04	DP04MSTH	4.03
3/8	LLGR-06	DP06MSTH	3.85
3/8	LLRD-06	DP06MSTH	3.85
3/8	SLGR-06	DP06MSTH	3.85
3/8	SLRD-06	DP06MSTH	3.85
1/2	LLBK-08	DP08MSTH	3.86
1/2	LLBU-08	DP08MSTH	3.86
1/2	LLGR-08	DP08MSTH	3.86
1/2	LLRD-08	DP08MSTH	3.86
1/2	SLBU-08	DP08MSTH	3.86
1/2	SLGR-08	DP08MSTH	3.86
1/2	SLLHBK-08	DP08MSTH	3.86
1/2	SLRD-08	DP08MSTH	3.86

FEMALE PUSHERS

Hose ID (in)	Use With Hose Series	Female Part Number	Weight (lbs/each)
1/4	LLGR-04	DP04FSTH	4.04
1/4	LLRD-04	DP04FSTH	4.04
1/4	SLGR-04	DP04FSTH	4.04
1/4	SLRD-04	DP04FSTH	4.04
3/8	LLGR-06	DP06FSTH	3.96
3/8	LLRD-06	DP06FSTH	3.96
3/8	SLGR-06	DP06FSTH	3.96
3/8	SLRD-06	DP06FSTH	3.96
1/2	LAGR-08	DP08FSTH	2.75
1/2	LHBK-08	DP08FSTH	2.18
1/2	LLBU-08	DP08FSTH	2.18
1/2	LLGR-08	DP08FSTH	2.18
1/2	SHBK-08	DP08FSTH	2.18
1/2	SLBU-08	DP08FSTH	2.18
1/2	SLGR-08	DP08FSTH	2.18
1/2	SLLHBK-08	DP08FSTH	2.18
1/2	SLSHBK-08	DP08FSTH	2.18
3/4	HABU-12	DP12FSTH	2.47
3/4	HPBU-12	DP12FSTH	1.87
3/4	SAOR-12	DP12FSTH	2.47
3/4	SLHPBU-12	DP12FSTH	1.87
3/4	SLSPOR-12	DP12FSTH	1.87
3/4	SPOR-12	DP12FSTH	1.87
1	HABU-16	DP16FSTH	2.18
1	HPBU-16	DP16FSTH	2.18
1	SAOR-16	DP16FSTH	2.18
1	SLHPBU-16	DP16FSTH	2.18
1	SLSPOR-16	DP16FSTH	2.18
1	SPOR-16	DP16FSTH	2.18

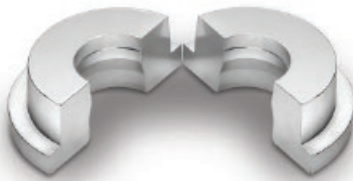
NOTE: THE USE OF FITTINGS AND ASSEMBLY TOOLING OTHER THAN THAT SUPPLIED BY PIRANHA HOSE PRODUCTS IS AT THE RISK AND LIABILITY OF THE USER.





HOSE PRODUCTS, INC.
A Kuriyama Group Company

NOTE: THE USE OF FITTINGS AND ASSEMBLY TOOLING OTHER THAN THAT SUPPLIED BY PIRANHA HOSE PRODUCTS IS AT THE RISK AND LIABILITY OF THE USER.



DIES

Hose ID (in)	Use With Hose Series	Dies Part Number	Weight (lbs/each)
1/8	LLGR-02	DS02TH	3.81
1/8	SLGR-02	DS02TH	3.81
3/16	LLGR-03	DS03TH	3.81
3/16	SLGR-03	DS03TH	3.81
1/4	LLGR-04	DS04TH	3.81
1/4	SLGR-04	DS04TH	3.81
1/4	LLRD-04	DS04TH	3.81
1/4	SLRD-04	DS04TH	3.81
3/8	SLGR-06	DS06TH	3.81
3/8	LLGR-06	DS06TH	3.81
1/2	LAGR-08	DSAR08TH	3.60
1/2	LHBK-08	DS08TH	3.72
1/2	LLBU-08	DS08TH	3.72
1/2	LLGR-08	DS08TH	3.72
1/2	LLRD-08	DS08TH	3.72
1/2	SHBK-08	DSSHPO8TH	2.15
1/2	SLBU-08	DS08TH	3.72
1/2	SLGR-08	DS08TH	3.72
1/2	SLHKBK-08	DS08TH	3.72
1/2	SLRD-08	DS08TH	3.72
1/2	SLSHBK-08	DSSHPO8TH	2.15
5/8	SHBK-10	DSAR08TH	2.18
5/8	SLSHBK-10	DSAR08TH	2.18
5/8	SLSPOR-10	DS10TH	3.61
5/8	SPOR-10	DS10TH	3.61
3/4	HABU-12	DSAR12TH	3.35
3/4	HPBU-12	DS12TH	3.45
3/4	SAOR-12	DSAR12TH	3.35
3/4	SLHPBU-12	DS12TH	3.45
3/4	SLSPOR-12	DS12TH	3.45
3/4	SPOR-12	DS12TH	3.45
1	HABU-16	DSAR16TH	3.08
1	HPBU-16	DS16TH	3.21
1	SAOR-16	DSAR16TH	3.08
1	SLHPBU-16	DS16TH	3.21
1	SLSPOR-16	DS16TH	3.21
1	SPOR-16	DS16TH	3.21
1 1/4	SAOR-20	DSAR20TH	2.67
1 1/4	SLSPOR-20	DS20TH	2.83
1 1/4	SPOR-20	DS20TH	2.83





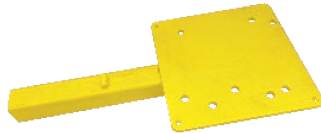
NEW! **PHP-110 Hand Operated Hydraulic Swaging Machine**

Part Number	Description	Weight (lbs/each)
SWAGE-HYDTH	HYD SWAGER	86.00



NEW! **Horizontal Swage Tool**

Part Number	Description	Weight (lbs/each)
SWAGE-HANDTH	HORIZNTL SWAGER	15.00



NEW! **Swage Hitch Mounting Plate for use with all Piranha Swaging Equipment**

Part Number	Description	Weight (lbs/each)
PHPSWAGE-MPTH	MOUNTING PLATE	17.00



NEW! **PHP-50 Mini Hydraulic Swaging Machine**

Part Number	Description	Weight (lbs/each)
SWAGE-LLTH	MINI HYD SWAGER	31

NOTE: THE USE OF FITTINGS AND ASSEMBLY TOOLING OTHER THAN THAT SUPPLIED BY PIRANHA HOSE PRODUCTS IS AT THE RISK AND LIABILITY OF THE USER.

NEW! **PHP-50 Swage Mini - Horizontal Swage Tool - Male Pusher**

Hose ID (in)	Use With Hose Series	Male Pusher Part Number	Die Set Required	Weight (lbs/each)
1/8	LLGR, SLGR -2	PHP50-02M	DS02TH	1.50
3/16	LLGR, SLGR -3	PHP50-02M or PHP50-04M	DS03TH	1.50
1/4	LLGR, SLGR-4	PHP50-04M	DS04TH	1.50
1/4	LLRD, SLRD -4	PHP50-04M	DS04TH	1.50
3/8	LLGR, SLGR-6	PHP50-06M	DS06TH	1.50
3/8	LLRD, SLRD-6	PHP50-06M	DS065TH	1.50
1/2	LAGR-8	PHP50-08M	DSAR08TH	1.50
1/2	LHBK, SLLHBK-8	PHP50-08M	DS08TH	1.50
1/2	LLBU, SLBU-8	PHP50-08M	DS08TH	1.50
1/2	LLGR, SLGR -8	PHP50-08M	DS08TH	1.50
1/2	LLRD, SLRD-8	PHP50-08M	DS08TH	1.50
1/2	SHBK, SLSHBK-8	PHP50-08M	DSSHP08TH	1.50



NOTE: ONE DIE SET AND A PUSHER ARE REQUIRED TO REPAIR AN END FITTING.

NOTE: THE USE OF FITTINGS AND ASSEMBLY TOOLING OTHER THAN THAT SUPPLIED BY PIRANHA HOSE PRODUCTS IS AT THE RISK AND LIABILITY OF THE USER.

NEW! **PHP-50 Swage Mini - Horizontal Swage Tool - Female Pusher**

Hose ID (in)	Use With Hose Series	Female Pusher Part Number	Die Set Required	Weight (lbs/each)
1/8	LLGR, SLGR -2	N/A	DS02TH	1.50
3/16	LLGR, SLGR -3	PHP50-02FS or PHP50-04FS	DS03TH	1.50
1/4	LLGR, SLGR-4	PHP50-04FS	DS04TH	1.50
1/4	LLRD, SLRD -4	PHP50-04FS	DS04TH	1.50
3/8	LLGR, SLGR-6	PHP50-06FS	DS06TH	1.50
3/8	LLRD, SLRD-6	PHP50-06FS	DS065TH	1.50
1/2	LAGR-8	PHP50-08FS	DSAR08TH	1.50
1/2	LHBK, SLLHBK-8	PHP50-08FS	DS08TH	1.50
1/2	LLBU, SLBU-8	PHP50-08FS	DS08TH	1.50
1/2	LLGR, SLGR -8	PHP50-08FS	DS08TH	1.50
1/2	LLRD, SLRD-8	PHP50-08FS	DS08TH	1.50
1/2	SHBK, SLSHBK-8	PHP50-08FS	DSSHP08TH	1.50

NEW! **PHP-50 Swage Mini - Horizontal Swage Tool - Male Swivel Pusher**

Hose ID (in)	Use With Hose Series	Male Swivel Pusher Part Number	Die Set Required	Weight (lbs/each)
1/8	LLGR, SLGR -2	NA	DS02TH	1.50
3/16	LLGR, SLGR -3	N/A	DS03TH	1.50
1/4	LLGR, SLGR-4	PHP50-04MS	DS04TH	1.50
1/4	LLRD, SLRD -4	PHP50-04MS	DS04TH	1.50
3/8	LLGR, SLGR-6	PHP50-06MS	DS06TH	1.50
3/8	LLRD, SLRD-6	PHP50-06MS	DS065TH	1.50
1/2	LAGR-8	PHP50-08MS	DSAR08TH	1.50
1/2	LHBK, SLLHBK-8	PHP50-08MS	DS08TH	1.50
1/2	LLBU, SLBU-8	PHP50-08MS	DS08TH	1.50
1/2	LLGR, SLGR -8	PHP50-08MS	DS08TH	1.50
1/2	LLRD, SLRD-8	PHP50-08MS	DS08TH	1.50
1/2	SHBK, SLSHBK-8	PHP50-08MS	DSSHP08TH	1.50

WARNING!


IF YOU SEE "IT" – STOP "IT": FAILURE TO PROPERLY REPAIR OR REPLACE HOSE AFTER EXPOSING WHITE BRAID REINFORCEMENT LAYER CAN CAUSE DEATH, PERSONAL INJURY AND PROPERTY DAMAGE.

Like strands in a bridge cable, each reinforcement fiber plays an exact role in the ultimate burst strength of the hose. A **minor** slice or nick in the reinforcement can result in total hose failure.

The age of the hose **does not matter!** It is unfortunate, but even a hose used (1) time can be damaged in severe applications. These hoses must be immediately removed from service.



DANGER
READ AND UNDERSTAND
THE FOLLOWING:

 **Warning:** This product can expose you to chemicals, including lead or titanium dioxide, which is known to the State of California to cause cancer and birth defects or other reproductive harm. For more information, go to www.P65warnings.ca.gov.

HOSE BASICS

1. NEVER EXCEED THE MAXIMUM WORKING **PRESSURE**.
2. NEVER EXCEED THE MAXIMUM WORKING **TEMPERATURE**.
3. NEVER APPLY PRESSURE TO A **DAMAGED** HOSE.
4. HIGH PRESSURE HOSES ARE DESIGNED TO USE SPECIFIC **FITTINGS** AND **TOOLING**. NEVER USE A DIFFERENT **BRAND** OF FITTINGS OR TOOLING. FAILURE TO DO SO CAN CAUSE DEATH, PERSONAL INJURY AND/OR PROPERTY DAMAGE.
5. A **KINKED**, **CRUSHED**, OR **BLISTERED** HOSE WILL EVENTUALLY FAIL – DO NOT RISK INJURY. IMMEDIATELY REPAIR OR REMOVE HOSE FROM SERVICE.
6. FOLLOW THE PUMP/EQUIPMENT MANUFACTURER'S **INSTRUCTIONS** FOR PRESSURIZED HOSE TESTING.

Cautionary Statement

All Products sold and distributed by Kuriyama of America, Inc. are in the nature of commodities and they are sold by published specifications and not for particular purposes, uses or applications. Purchaser shall first determine their suitability for the intended purposes, uses or applications and shall either conduct its own engineering studies or tests, or retain qualified engineers, consultants or testing laboratories and consult with them before determining the proper use, suitability or propriety of the merchandise or Products for the intended purposes, uses or applications.

Kuriyama of America, Inc. ("Seller") does not recommend the Products for any particular purpose, use or application, and the Purchaser or user thereof shall assume full responsibility for the suitability, propriety, use and application of the Products. Purchaser shall follow all instructions contained in Seller's catalogs, brochures, technical bulletins and other documents regarding the Products. The Products, including but not limited to, hose, tubing or couplings, may fail due to the use or conveyance of substances at elevated or lowered temperatures or at excessive pressure, the conveyance of abrasive, injurious, flammable, explosive or damaging substances.

Hose or tubing used in bent configurations will be subjected to increased abrasion. Hose clamps or couplings may loosen after initial installation and all sections of hose and tubing including connections, couplings, clamps, conductivity and bonding should be inspected frequently, regularly and consistently, and should be replaced, adjusted or re-tightened for the avoidance of leakage, for the prevention of injuries or damages, and for general safety purposes. Except as indicated in its Limited Warranty, Seller shall not be liable or responsible for direct or indirect injuries or damages caused by or attributed to the failure or malfunction of any Products sold or distributed by it.

Purchasers or users of the Products should frequently and consistently undertake inspections and protective measures with respect to the use and application of Products, which should include the examination of tube and cover, conditions of the hose or tubing, and the identification, repair or replacement of sections showing cracking, blistering, separations, internal and external abrasions, leaking or slipped couplings or connections and make proper proof tests.

Limited Warranty

The Products sold or distributed by Seller are warranted to its customers to be free from defects in material and workmanship at the time of shipment by us, subject to the following provisions. ALL WARRANTY CLAIMS SHALL BE MADE WITHIN SIX (6) MONTHS AFTER SELLER SHIPPED THE PRODUCTS. SELLER'S LIABILITY HEREUNDER IS LIMITED AT SELLER'S EXCLUSIVE DISCRETION, TO 1) THE PURCHASE PRICE OF ANY PRODUCTS PROVING DEFECTIVE; 2) REPAIR OF ANY DEFECTIVE PRODUCT OR PART THEREOF; OR 3) REPLACEMENT OF ANY DEFECTIVE PRODUCT OR PART UPON ITS AUTHORIZED RETURN TO SELLER.

THIS WARRANTY IS IN LIEU OF AND EXCLUDES ALL OTHER WARRANTIES, EXPRESSED, IMPLIED, STATUTORY, OR OTHERWISE CREATED UNDER APPLICABLE LAW INCLUDING, BUT NOT LIMITED TO, THE WARRANTY OF MERCHANTABILITY AND THE WARRANTY OF FITNESS FOR A PARTICULAR PURPOSE. IN NO EVENT SHALL SELLER OR THE MANUFACTURER OF THE PRODUCT BE LIABLE FOR SPECIAL, INCIDENTAL, OR CONSEQUENTIAL DAMAGES, INCLUDING LOSS OF PROFITS, WHETHER OR NOT CAUSED BY OR RESULTING FROM THE NEGLIGENCE OF SELLER AND/OR THE MANUFACTURER OF THE PRODUCT, UNLESS SPECIFICALLY PROVIDED HEREIN. IN ADDITION, THIS WARRANTY SHALL NOT APPLY TO ANY PRODUCTS OR PORTIONS THEREOF WHICH HAVE BEEN SUBJECTED TO ABUSE, MISUSE, IMPROPER INSTALLATION, MAINTENANCE, OR OPERATION, ELECTRICAL FAILURE OR ABNORMAL CONDITIONS, AND TO PRODUCTS WHICH HAVE BEEN TAMPERED WITH, ALTERED, MODIFIED, REPAIRED, REWORKED BY ANYONE NOT APPROVED BY SELLER, OR USED IN ANY MANNER INCONSISTENT WITH THE PROVISIONS OF THE "CAUTIONARY STATEMENT" ABOVE OR ANY INSTRUCTIONS OR SPECIFICATIONS PROVIDED WITH OR FOR THE PRODUCT.

09/17/18 REV

Distributed by:



Kuriyama of America, Inc.

Headquarters, Sales Office and Warehouse Location

360 E. State Parkway, Schaumburg, IL 60173-5335

Phone: (847) 755-0360 Toll-free FAX: (800) 800-0320

International FAX: (847) 885-0996

Web Site: www.kuriyama.com

E-Mail: sales@kuriyama.com



Visit us
www.kuriyama.com
on the Web!

The trademarks contained in this publication are trademarks of Kuriyama of America, Inc.

©2019 Kuriyama of America, Inc. All rights reserved.

SALES OFFICES-CONTACT THE LOCATION BELOW WHICH SERVES YOUR AREA

Southwest Warehouse
Kuriyama of America, Inc. Houston
200 PORTWALL ST., SUITE 100
HOUSTON, TX 77029
Phone: (713) 674-8212
Toll Free Phone: (800) 501-6808
Fax: (713) 674-5214
Toll Free Fax: (800) 800-5214

Western Warehouse
Kuriyama of America, Inc. Santa Fe Springs
10749 SHOEMAKER AVE.
SANTA FE SPRINGS, CA 90670-4039
Phone: (562) 941-4507
Fax: (561) 941-8940
Toll-Free Fax: (800) 326-8940

Southeast Warehouse
Fortney Sales Co., Inc.
4221 Cantrell Road NW
ACWORTH, GA 30101
Phone: (770) 427-6528
FAX: (770) 423-9249
Toll Free FAX: (800) 423-9249
Web Site: www.fortneysales.com
E-Mail: sales@fortneysales.com

Eastern Warehouse
Eastern Rubber & Plastics Co., Inc.
100 Goldman Dr.
Plumsted Industrial Park
Cream Ridge, NJ 08514
Phone: (609) 758-0100
Fax: (609) 758-0102
Toll-Free Fax: (800) 445-7138
Web Site: www.easternrubber.com
E-Mail: sales@easternrubber.com

IN MEXICO:

Kuriyama de México S de RL de CV
AV JOSE PALOMO MARTINEZ NO 520-20, BODEGA 5
PARQUE INDUSTRIAL OMOLAP
APODACA, (MONTERREY), N.L. CP: 66633 MEXICO
Tel: (81) 1086-1870 Ó 71
Toll-Free (within Mexico) 01-800-822-52-00
Fax: (81) 1086-1869
Internet: www.kuriyama.com
Correo Electronico: ventas@kuriyama.com

IN CANADA:

KURI TEC CORPORATION
140 Roy Boulevard
Brantford, ONT, Canada N3R 7K2
Phone: (519) 753-6717
Fax: (519) 753-7737
Web Site: <http://www.kuritec.com>
E-Mail: sales@kuritec.com



kuriyama.com/50years

Printed in U. S. A.

KPRTGCA1019