

## Rough Bore (unlined) Interlocked Metal Hose

### HTS4000 Series

### HTG4000 Series

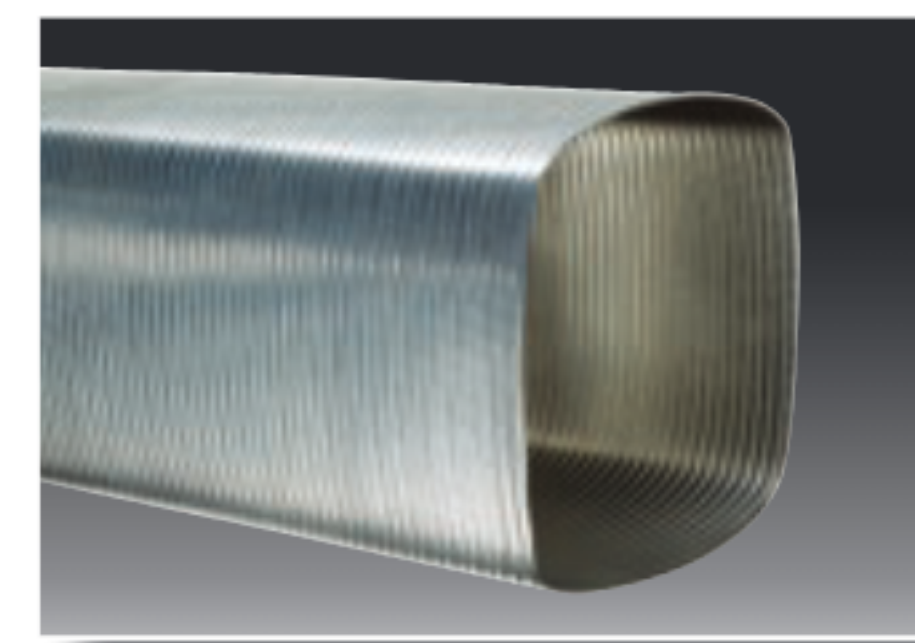
#### Applications:

- Abrasive material handling
- BOP (Blow out Protection) for hydraulic, cryogenic and other high pressure hoses
- Bulk truck and railcar unloading
- Dry bulk transfer
- Fly ash and soda handling
- Grain handling
- Transfer of high temperature air, gasses and materials (Not for use with hot tar and asphalt applications)
- Protective armor/shielding for hoses
- Truck tailpipe exhaust
- Vacuum trucks and equipment

**Construction:** A single strip of galvanized or 304 stainless steel wound into a interlocked metal hose, with or without packing materials.

**Max Service Temperature:** Galvanized: to 750°F (399°C), Stainless: to 1,500°F (816°C)

Note: for packed hoses service temperature see page 19.



Also available in oval, square or rectangle.

#### Features and Advantages:

- **Abrasion Resistant and Durable** – steel construction resists damage from abrasive and damaging materials.
- **Corrosion Resistant (Stainless Only)** – 304 stainless version resists corrosion making it resistant to the elements.
- **Heat Resistant** – can withstand very high temperatures allowing for the transfer of hot materials. (Not for use with hot tar and asphalt applications)
- **Conductive** – prevents the build-up of static electricity eliminating the risk of “hose arcing”.
- **Flexible** – corrugations allow for greater flexibility than lined metal hose.

## Nominal Specifications

Weight	Series	Material	Wall Thickness (in.)	Max Service Temp (°F)	Standard Length (ft.)
Extra Light Weight	HTG4100	Galvanized Steel	0.0110	750	50/25
	HTS4100	304 Stainless Steel	0.0110	1,500	50/25
Light Weight	HTG4150	Galvanized Steel	0.0150	750	50/25
	HTS4150	304 Stainless Steel	0.0150	1,500	50/25
Medium Weight	HTG4200	Galvanized Steel	0.0185	750	50/25
	HTS4200	304 Stainless Steel	0.0185	1,500	50/25
Heavy Weight	HTG4250	Galvanized Steel	0.0245	750	50/25
	HTS4250	304 Stainless Steel	0.0245	1,500	50/25
Extra Heavy Weight	HTG4300	Galvanized Steel	0.0290	750	50/25
	HTS4300	304 Stainless Steel	0.0290	1,500	50/25

PLEASE REFER TO THE BACK PAGE FOR THE LOCATION OF YOUR NEAREST WAREHOUSE FOR AVAILABILITY OF PRODUCTS/SIZES SHOWN.

Because we continually examine ways to improve our products, we reserve the right to alter specifications or discontinue products without prior notice.



### Rough Bore (unlined) Interlocked Metal Hose

#### HTS4000 Series

#### HTG4000 Series

## Nominal Specifications

Hose Size I.D. (in.)	HTG4100 HTS4100		HTG4150 HTS4150		HTG4200 HTS4200		HTG4250 HTS4250		HTG4300 HTS4300	
	Extra Light Weight		Light Weight		Med. Weight		Heavy Weight		Extra Hvy. Weight	
	Min. Inside Bend Radius (in.)	Weight (lbs./ft.)	Min. Inside Bend Radius (in.)	Weight (lbs./ft.)	Min. Inside Bend Radius (in.)	Weight (lbs./ft.)	Min. Inside Bend Radius (in.)	Weight (lbs./ft.)	Min. Inside Bend Radius (in.)	Weight (lbs./ft.)
1 <sup>3</sup> / <sub>8</sub>	4.25	0.45	5.00	0.60	—	—	—	—	—	—
1 <sup>1</sup> / <sub>2</sub>	4.75	0.50	5.50	0.70	6.00	1.00	—	—	—	—
1 <sup>5</sup> / <sub>8</sub>	5.00	0.54	5.75	0.75	6.50	1.05	—	—	—	—
1 <sup>3</sup> / <sub>4</sub>	5.25	0.58	6.00	0.80	7.00	1.10	—	—	—	—
1 <sup>7</sup> / <sub>8</sub>	5.50	0.62	6.25	0.85	7.50	1.20	—	—	—	—
2	6.00	0.70	6.50	0.90	8.00	1.30	9.00	1.60	9.50	2.10
2 <sup>1</sup> / <sub>4</sub>	6.75	0.75	7.25	1.10	8.50	1.45	9.50	1.80	10.00	2.20
2 <sup>1</sup> / <sub>2</sub>	7.50	0.80	8.00	1.20	9.00	1.60	10.00	2.00	10.50	2.30
2 <sup>3</sup> / <sub>4</sub>	8.75	0.90	8.25	1.30	10.00	1.80	11.00	2.15	11.50	2.50
3	10.00	1.00	10.50	1.40	11.00	2.00	12.00	2.30	13.00	2.70
3 <sup>1</sup> / <sub>4</sub>	10.50	1.10	11.25	1.50	12.00	2.10	13.00	2.50	13.50	2.95
3 <sup>1</sup> / <sub>2</sub>	11.00	1.20	12.00	1.60	12.50	2.30	13.50	2.70	14.00	3.20
4	12.50	1.40	13.50	1.80	14.50	2.60	15.00	3.10	15.50	3.60
4 <sup>1</sup> / <sub>2</sub>	14.00	1.50	15.00	2.00	16.00	2.90	17.00	3.50	18.00	4.10
5	15.00	1.70	16.00	2.30	17.00	3.00	18.00	3.90	19.00	4.50
5 <sup>1</sup> / <sub>4</sub>	16.00	1.80	17.25	2.40	18.00	3.15	19.50	4.10	20.50	4.75
5 <sup>1</sup> / <sub>2</sub>	17.50	1.90	18.50	2.50	19.50	3.30	21.00	4.30	22.00	5.00
6	20.00	2.00	21.00	2.70	22.00	3.60	23.50	4.70	25.00	5.40
6 <sup>1</sup> / <sub>4</sub>	20.50	2.10	21.50	2.80	23.00	3.75	24.50	4.90	26.00	5.60
6 <sup>1</sup> / <sub>2</sub>	21.00	2.20	22.00	2.95	23.50	3.90	25.00	5.10	26.50	5.80
7	22.00	2.40	23.00	3.20	25.00	4.20	26.50	5.50	28.00	6.30
7 <sup>1</sup> / <sub>4</sub>	23.00	2.50	23.75	3.30	26.00	4.30	27.50	5.70	29.00	6.50
7 <sup>1</sup> / <sub>2</sub>	24.00	2.60	24.50	3.40	26.50	4.40	28.00	5.85	29.50	6.75
8	25.00	2.70	26.00	3.60	28.00	4.70	29.50	6.20	31.00	7.20
9	—	—	28.25	4.05	30.50	5.30	32.00	6.60	34.00	7.60
9 <sup>1</sup> / <sub>2</sub>	—	—	29.50	4.25	31.50	5.60	33.50	6.80	35.50	7.80
10	—	—	30.50	4.50	32.50	5.90	34.50	7.00	37.00	9.00
11	—	—	33.00	5.00	35.50	6.50	37.50	7.40	39.50	9.90
11 <sup>1</sup> / <sub>4</sub>	—	—	33.75	5.10	36.00	6.60	38.00	7.50	40.50	10.20
11 <sup>1</sup> / <sub>2</sub>	—	—	34.50	5.20	37.00	6.75	38.50	7.60	41.50	10.40
12	—	—	36.00	5.40	38.00	7.00	40.00	7.80	42.00	10.80
14	—	—	50.00	6.30	53.00	8.10	55.00	9.40	57.50	12.60
16	—	—	—	—	60.50	9.20	62.50	11.00	75.00	14.40

**NOTE:** Standard lengths are 25 ft. and 50 ft. coils, **WHEN FULLY EXTENDED;** other lengths available on request.

PLEASE REFER TO THE BACK PAGE FOR THE LOCATION OF YOUR NEAREST WAREHOUSE FOR AVAILABILITY OF PRODUCTS/SIZES SHOWN.

Because we continually examine ways to improve our products, we reserve the right to alter specifications or discontinue products without prior notice.