



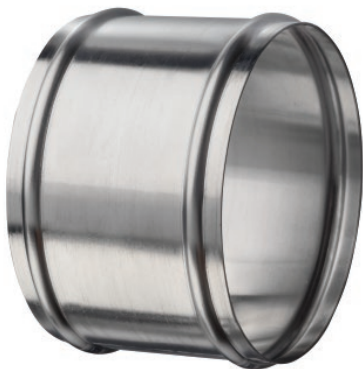
**Bridge Clamp for Ducting Hoses  
300 Stainless Worm Gear Band  
(For Tigerflex™ Counterclockwise Spiral Hoses)**

| Part Number | Size (in) | Size Range (in) | Weight Each (lbs) | Standard Carton |
|-------------|-----------|-----------------|-------------------|-----------------|
| DCLPL250    | 2 1/2     | 2 3/8 - 2 3/4   | 0.086             | 200             |
| DCLPL300    | 3         | 2 7/8 - 3 3/8   | 0.093             | 200             |
| DCLPL400    | 4         | 3 1/2 - 4 1/2   | 0.130             | 200             |
| DCLPL500    | 5         | 4 3/8 - 5 1/4   | 0.143             | 200             |
| DCLPL600    | 6         | 5 1/4 - 6 1/4   | 0.167             | 200             |
| DCLPL700    | 7         | 6 1/4 - 7 1/4   | 0.175             | 200             |
| DCLPL800    | 8         | 7 3/8 - 8 3/8   | 0.207             | 100             |
| DCLPL1000   | 10        | 9 1/4 - 10 1/4  | 0.242             | 100             |
| DCLPL1200   | 12        | 11 1/4 - 12 1/4 | 0.284             | 100             |



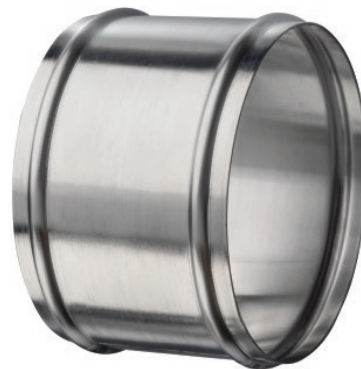
**Bridge Clamp for Ducting Hoses  
300 Stainless Worm Gear Band  
(For Flexair™ Clockwise Spiral Hoses)**

| Part Number | Size (in) | Size Range (in) | Weight Each (lbs) | Standard Carton |
|-------------|-----------|-----------------|-------------------|-----------------|
| DCLPR250    | 2 1/2     | 2 3/8 - 2 3/4   | 0.086             | 200             |
| DCLPR300    | 3         | 2 7/8 - 3 3/8   | 0.093             | 200             |
| DCLPR400    | 4         | 3 1/2 - 4 1/2   | 0.130             | 200             |
| DCLPR500    | 5         | 4 3/8 - 5 1/4   | 0.143             | 200             |
| DCLPR600    | 6         | 5 1/4 - 6 1/4   | 0.167             | 200             |
| DCLPR700    | 7         | 6 1/4 - 7 1/4   | 0.175             | 200             |
| DCLPR800    | 8         | 7 3/8 - 8 3/8   | 0.207             | 100             |
| DCLPR1000   | 10        | 9 1/4 - 10 1/4  | 0.242             | 100             |
| DCLPR1200   | 12        | 11 1/4 - 12 1/4 | 0.284             | 100             |



**Aluminum Ducting Hose Menders  
(For URE-CL, URE-BK, UREH-CL, UREH-BK,  
VID-CL, and TMOD Series)**

| Part Number | Size (in) | Weight Each (lbs) |
|-------------|-----------|-------------------|
| DHM-AL600   | 6         | 0.28              |
| DHM-AL800   | 8         | 0.38              |
| DHM-AL1000  | 10        | 0.49              |
| DHM-AL1200  | 12        | 0.60              |



**Stainless Steel Ducting Hose Menders  
(For URE-CL, URE-BK, UREH-CL, UREH-BK,  
VID-CL, and TMOD Series)**

| Part Number | Size (in) | Weight Each (lbs) |
|-------------|-----------|-------------------|
| DHM-SS600   | 6         | 0.40              |
| DHM-SS800   | 8         | 0.54              |
| DHM-SS1000  | 10        | 0.68              |
| DHM-SS1200  | 12        | 0.76              |

Note: Ducting menders to be used in conjunction with two bridge clamps.