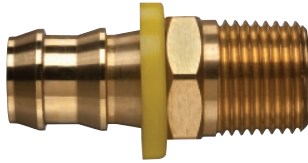


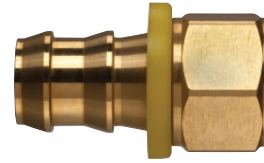


## Brass Push-On Fittings



**Male Pipe (NPTF Threads)**

Part Number	Hose Size (in)	Fitting Size (in)	Thread (in-TPI)	Weight Each (lbs)	Standard Carton
POFMP-0402	1/4	1/8	1/8 - 27	0.031	100
POFMP-0404	1/4	1/4	1/4 - 18	0.044	100
POFMP-0406	1/4	3/8	3/8 - 18	0.055	50
POFMP-0604	3/8	1/4	1/4 - 18	0.053	50
POFMP-0606	3/8	3/8	3/8 - 18	0.071	50
POFMP-0608	3/8	1/2	1/2 - 14	0.119	25
POFMP-0808	1/2	1/2	1/2 - 14	0.121	25
POFMP-1008	5/8	1/2	1/2 - 14	0.143	25
POFMP-1012	5/8	3/4	3/4 - 14	0.190	25
POFMP-1208	3/4	1/2	1/2 - 14	1.960	25
POFMP-1212	3/4	3/4	3/4 - 14	1.940	25



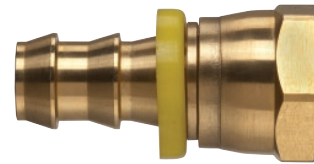
**Female Pipe (NPTF Threads)**

Part Number	Hose Size (in)	Fitting Size (in)	Thread (in-TPI)	Weight Each (lbs)	Standard Carton
POFFP-0402	1/4	1/8	1/8 - 27	0.029	100
POFFP-0404	1/4	1/4	1/4 - 18	0.049	100
POFFP-0604	3/8	1/4	1/4 - 18	0.055	50
POFFP-0606	3/8	3/8	3/8 - 18	0.064	50
POFFP-0806	1/2	3/8	3/8 - 18	0.077	50
POFFP-0808	1/2	1/2	1/2 - 14	0.099	25
POFFP-1008	5/8	1/2	1/2 - 14	0.119	25
POFFP-1212	3/4	3/4	3/4 - 14	0.234	25



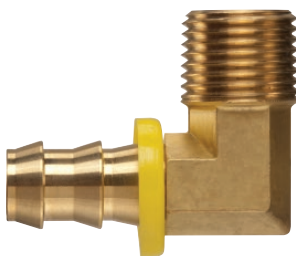
**Male Pipe Swivel (NPTF Threads)**

Part Number	Hose Size (in)	Fitting Size (in)	Thread (in-TPI)	Weight Each (lbs)	Standard Carton
POFMPS-0404	1/4	1/4	1/4 - 18	0.062	50
POFMPS-0606	3/8	3/8	3/8 - 18	0.090	25
POFMPS-0808	1/2	1/2	1/2 - 14	0.143	25
POFMPS-1212	3/4	3/4	3/4 - 14	0.249	25



**Female Pipe Swivel (NPTF Threads)**

Part Number	Hose Size (in)	Fitting Size (in)	Thread (in-TPI)	Weight Each (lbs)	Standard Carton
POFFPS-0404	1/4	1/4	1/4 - 18	0.060	50
POFFPS-0606	3/8	3/8	3/8 - 18	0.093	50
POFFPS-0808	1/2	1/2	1/2 - 14	0.117	50
POFFPS-1212	3/4	3/4	3/4 - 14	0.214	25



**Male Pipe 90 Degree Elbow (NPTF Threads)**

Part Number	Hose Size (in)	Fitting Size (in)	Thread (in-TPI)	Weight Each (lbs)	Standard Carton
POFMPE-0404	1/4	1/4	1/4 - 18	0.062	50
POFMPE-0606	3/8	3/8	3/8 - 18	0.088	25
POFMPE-0808	1/2	1/2	1/2 - 14	0.165	25
POFMPE-1212	3/4	3/4	3/4 - 14	0.293	25



**Hose Mender**

Part Number	Size (in)	Weight Each (lbs)	Standard Carton
POFMMD-0404	1/4	0.026	100
POFMMD-0606	3/8	0.046	50
POFMMD-0808	1/2	0.073	50
POFMMD-1010	5/8	0.130	25
POFMMD-1212	3/4	0.159	25

Because we continually examine ways to improve our products, we reserve the right to alter specifications or discontinue products without prior notice.