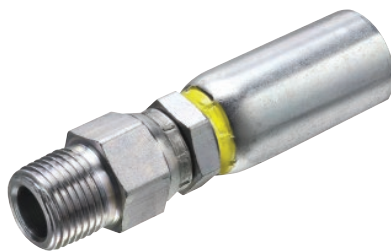




FEMALE ADAPTER FITTINGS

Hose ID (in)	Use With Hose Series	Female Adapter Part Number	Weight (lbs/each)
3/8	LLGR-06	A06FPX06FS	0.16
3/8	SLGR-06	A06FPX06FS	0.16
1/2	LAGR-08	A08FPX08FS	0.21
1/2	LHBK-08	A08FPX08FS	0.21
1/2	LLBU-08	A08FPX08FS	0.21
1/2	LLGR-08	A08FPX08FS	0.21
1/2	LLRD-08	A08FPX08FS	0.21
1/2	SHBK-08	A08FPX08FS	0.21
1/2	SLBU-08	A08FPX08FS	0.21
1/2	SLGR-08	A08FPX08FS	0.21
1/2	SLLHBK-08	A08FPX08FS	0.21
1/2	SLRD-08	A08FPX08FS	0.21
1/2	SLSHBK-08	A08FPX08FS	0.21
5/8	SAOR-10	A08FPX08FS	0.21
5/8	SHBK-10	A08FPX08FS	0.21
5/8	SLSHBK-10	A08FPX08FS	0.21
5/8	SLSPOR-10	A08FPX08FS	0.21
5/8	SPOR-10	A08FPX08FS	0.21
3/4	HPBU-12	A12FPX12FS	0.34
3/4	SLHPBU-12	A12FPX12FS	0.34
3/4	SLSPOR-12	A12FPX12FS	0.34
3/4	SPOR-12	A12FPX12FS	0.34

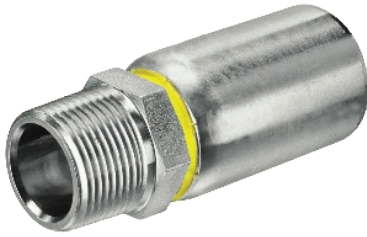


MALE SWIVEL FITTING

Hose ID (in)	Use With Hose Series	Male Swivel Part Number	Weight (lbs/each)
1/4	LLGR-04	F04MSNPT4	0.17
1/4	LLRD-04	F04MSNPT4	0.17
1/4	SLGR-04	F04MSNPT4	0.17
1/4	SLRD-04	F04MSNPT4	0.17
3/8	LLGR-06	F06MSNPT6	0.23
3/8	SLGR-06	F06MSNPT6	0.23
1/2	LHBK-08	F08MSNPT8	0.35
1/2	LLBU-08	F08MSNPT8	0.35
1/2	LLGR-08	F08MSNPT8	0.35
1/2	LLRD-08	F08MSNPT8	0.35
1/2	SLGR-08	F08MSNPT8	0.35

NOTE: THE USE OF FITTINGS AND ASSEMBLY TOOLING OTHER THAN THAT SUPPLIED BY PIRANHA HOSE PRODUCTS IS AT THE RISK AND LIABILITY OF THE USER.

Sewer & Lateral Line Hose Fittings

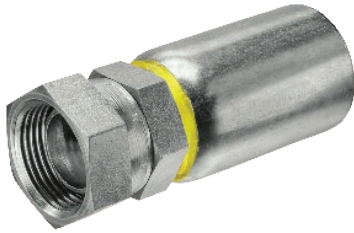


MALE FITTINGS

Hose ID (in)	Use With Hose Series	Male Part Number	Weight (lbs/each)
1/8	LLGR-02	F02NPT2	0.04
1/8	SLGR-02	F02NPT2	0.04
3/16X1/8	LLGR-03	F03NPT2	0.08
3/16X1/8	SLGR-03	F03NPT2	0.08
3/16X1/4	LLGR-03	F03NPT4	0.10
3/16X1/4	SLGR-03	F03NPT4	0.10
1/4	LLGR-04	F04NPT4	0.12
1/4	LLRD-04	F04NPT4	0.12
1/4	SLGR-04	F04NPT4	0.12
1/4	SLRD-04	F04NPT4	0.12
3/8	LLGR-06	F06NPT6	0.17
3/8	LLRD-06	FCP06NPT-NS	0.18
3/8	SLGR-06	F06NPT6	0.17
3/8	SLRD-06	FCP06NPT-NS	0.18
1/2	LAGR-08	FAR08NPT8	0.35
1/2	LHBK-08	F08NPT8	0.28
1/2	LLBU-08	F08NPT8	0.28
1/2	LLGR-08	F08NPT8	0.28
1/2	LLRD-08	F08NPT8	0.28
1/2	SHBK-08	FHP08NPT8	0.29
1/2	SLBU-08	F08NPT8	0.28
1/2	SLGR-08	F08NPT8	0.28
1/2	SLLHBK-08	F08NPT8	0.28
1/2	SLRD-08	F08NPT8	0.28
1/2	SLSHBK-08	FHP08NPT8	0.29
5/8	SHBK-10	FHP10NPT8	0.34
5/8	SLSHBK-10	FHP10NPT8	0.34
5/8	SLSPOR-10	F10NPT8	0.36
5/8	SPOR-10	F10NPT8	0.36
3/4	HABU-12	FAR12NPT12	0.50
3/4	HPBU-12	F12NPT12	0.43
3/4	SAOR-12	FAR12NPT12	0.50
3/4	SLHPBU-12	F12NPT12	0.43
3/4	SLSPOR-12	F12NPT12	0.43
3/4	SPOR-12	F12NPT12	0.43
1	HABU-16	FAR16NPT16	0.79
1	HPBU-16	F16NPT16	0.71
1	SAOR-16	FAR16NPT16	0.79
1	SLHPBU-16	F16NPT16	0.71
1	SLSPOR-16	F16NPT16	0.71
1	SPOR-16	F16NPT16	0.71
1 1/4	SAOR-20	FAR20NPT20	1.00
1 1/4	SLSPOR-20	F20NPT20	1.00
1 1/4	SPOR-20	F20NPT20	1.00

NOTE: THE USE OF FITTINGS AND ASSEMBLY TOOLING OTHER THAN THAT SUPPLIED BY PIRANHA HOSE PRODUCTS IS AT THE RISK AND LIABILITY OF THE USER.

Sewer & Lateral Line Hose Fittings



FEMALE FITTINGS

Hose ID (in)	Use With Hose Series	Female Part Number	Weight (lbs/each)
3/8	LLRD-06	FCP06FS	0.21
1/2	LAGR-08	FAR08FS8	0.39
1/2	LHBK-08	F08FS8	0.29
1/2	LLBU-08	F08FS8	0.29
1/2	LLGR-08	F08FS8	0.29
1/2	SHBK-08	FHP08FS8	0.30
1/2	SLBU-08	F08FS8	0.29
1/2	SLGR-08	F08FS8	0.29
1/2	SLLHBK-08	F08FS8	0.29
1/2	SLSHBK-08	FHP08FS8	0.30
3/4	HABU-12	FAR12FS12	0.60
3/4	HPBU-12	F12FS12	0.52
3/4	SAOR-12	FAR12FS12	0.60
3/4	SLHPBU-12	F12FS12	0.52
3/4	SLSPOR-12	F12FS12	0.52
3/4	SPOR-12	F12FS12	0.52
1	HABU-16	FAR16FS16	0.89
1	HPBU-16	F16FS16	0.81
1	SAOR-16	FAR16FS16	0.89
1	SLHPBU-16	F16FS16	0.81
1	SLSPOR-16	F16FS16	0.81
1	SPOR-16	F16FS16	0.81



MENDERS

Hose ID (in)	Use With Hose Series	Mender Part Number	Weight (lbs/each)
1/2	LAGR-08	FAR08MEND	0.40
1/2	LHBK-08	FLL08MEND	0.33
1/2	LLBU-08	FLL08MEND	0.33
1/2	LLGR-08	FLL08MEND	0.33
1/2	SHBK-08	F08MEND	0.36
1/2	SLBU-08	FLL08MEND	0.33
1/2	SLGR-08	FLL08MEND	0.33
1/2	SLLHBK-08	FLL08MEND	0.33
1/2	SLSHBK-08	F08MEND	0.36
5/8	SHBK-10	FA10MEND	0.45
5/8	SLSHBK-10	FA10MEND	0.45
5/8	SLSPOR-10	F10MEND	0.47
5/8	SPOR-10	F10MEND	0.47
3/4	HABU-12	FAR12MEND	0.64
3/4	HPBU-12	F12MEND	0.54
3/4	SAOR-12	FAR12MEND	0.64
3/4	SLHPBU-12	F12MEND	0.54
3/4	SLSPOR-12	F12MEND	0.54
3/4	SPOR-12	F12MEND	0.54
1	HABU-16	FAR16MEND	0.99
1	HPBU-16	F16MEND	0.73
1	SAOR-16	FAR16MEND	0.99
1	SLHPBU-16	F16MEND	0.73
1	SLSPOR-16	F16MEND	0.73
1	SPOR-16	F16MEND	0.73
1 1/4	SLSPOR-20	F20MEND	1.04
1 1/4	SPOR-20	F20MEND	1.04

NOTE: WHEN USING A MENDER, 2 DIE SETS ARE REQUIRED TO MEND A HOSE.

NOTE: THE USE OF FITTINGS AND ASSEMBLY TOOLING OTHER THAN THAT SUPPLIED BY PIRANHA HOSE PRODUCTS IS AT THE RISK AND LIABILITY OF THE USER.

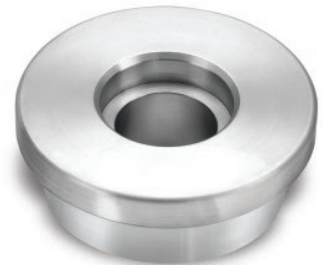
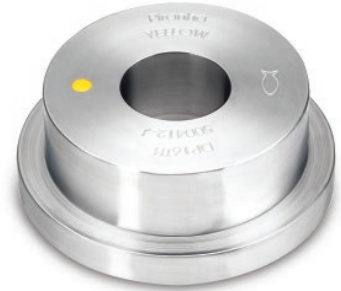


HOSE PRODUCTS, INC.
A Kuriyama Group Company

MALE PUSHERS

Hose ID (in)	Use With Hose Series	Male Part Number	Weight (lbs/each)
1/8	LLGR-02	DP02TH	2.33
1/8	SLGR-02	DP02TH	2.33
3/16	LLGR-03	DP02TH	2.33
3/16	SLGR-03	DP02TH	2.33
1/4	LLGR-04	DP04TH	2.33
1/4	LLRD-04	DP04TH	2.33
1/4	SLGR-04	DP04TH	2.33
1/4	SLRD-04	DP04TH	2.33
3/8	LLGR-06	DP06TH	2.33
3/8	SLGR-06	DP06TH	2.33
1/2	LAGR-08	DP08TH	2.19
1/2	LHBK-08	DP08TH	2.23
1/2	LLBU-08	DP08TH	2.23
1/2	LLGR-08	DP08TH	2.23
1/2	LLRD-08	DP08TH	2.23
1/2	SHBK-08	DP08TH	2.23
1/2	SLBU-08	DP08TH	2.23
1/2	SLGR-08	DP08TH	2.23
1/2	SLLHBK-08	DP08TH	2.23
1/2	SLRD-08	DP08TH	2.23
1/2	SLSHBK-08	DP08TH	2.23
5/8	SHBK-10	DP08TH	2.23
5/8	SLSHBK-10	DP08TH	2.23
5/8	SLSPOR-10	DP08TH	2.23
5/8	SPOR-10	DP08TH	2.23
3/4	HABU-12	DP12TH	2.07
3/4	HPBU-12	DP12TH	2.11
3/4	SAOR-12	DP12TH	2.07
3/4	SLHPBU-12	DP12TH	2.11
3/4	SLSPOR-12	DP12TH	2.11
3/4	SPOR-12	DP12TH	2.11
1	HABU-16	DP16TH	1.77
1	HPBU-16	DP16TH	1.81
1	SAOR-16	DP16TH	1.77
1	SLHPBU-16	DP16TH	1.81
1	SLSPOR-16	DP16TH	1.81
1	SPOR-16	DP16TH	1.81
1 1/4	SAOR-20	DP20TH	1.39
1 1/4	SLSPOR-20	DP20TH	1.66
1 1/4	SPOR-20	DP20TH	1.66

NOTE: ONE DIE SET AND A PUSHER ARE REQUIRED TO COMPLETE AN ASSEMBLY.



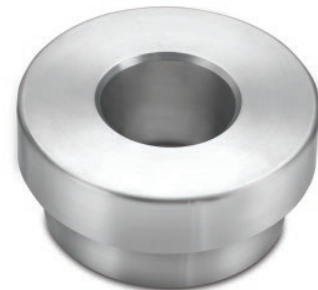
MALE SWIVEL PUSHERS

Hose ID (in)	Use With Hose Series	Male Part Number	Weight (lbs/each)
1/4	LLGR-04	DP04MSTH	4.03
1/4	LLRD-04	DP04MSTH	4.03
1/4	SLGR-04	DP04MSTH	4.03
1/4	SLRD-04	DP04MSTH	4.03
3/8	LLGR-06	DP06MSTH	3.85
3/8	LLRD-06	DP06MSTH	3.85
3/8	SLGR-06	DP06MSTH	3.85
3/8	SLRD-06	DP06MSTH	3.85
1/2	LLBK-08	DP08MSTH	3.86
1/2	LLBU-08	DP08MSTH	3.86
1/2	LLGR-08	DP08MSTH	3.86
1/2	LLRD-08	DP08MSTH	3.86
1/2	SLBU-08	DP08MSTH	3.86
1/2	SLGR-08	DP08MSTH	3.86
1/2	SLLHBK-08	DP08MSTH	3.86
1/2	SLRD-08	DP08MSTH	3.86

FEMALE PUSHERS

Hose ID (in)	Use With Hose Series	Female Part Number	Weight (lbs/each)
1/4	LLGR-04	DP04FSTH	4.04
1/4	LLRD-04	DP04FSTH	4.04
1/4	SLGR-04	DP04FSTH	4.04
1/4	SLRD-04	DP04FSTH	4.04
3/8	LLGR-06	DP06FSTH	3.96
3/8	LLRD-06	DP06FSTH	3.96
3/8	SLGR-06	DP06FSTH	3.96
3/8	SLRD-06	DP06FSTH	3.96
1/2	LAGR-08	DP08FSTH	2.75
1/2	LHBK-08	DP08FSTH	2.18
1/2	LLBU-08	DP08FSTH	2.18
1/2	LLGR-08	DP08FSTH	2.18
1/2	SHBK-08	DP08FSTH	2.18
1/2	SLBU-08	DP08FSTH	2.18
1/2	SLGR-08	DP08FSTH	2.18
1/2	SLLHBK-08	DP08FSTH	2.18
1/2	SLSHBK-08	DP08FSTH	2.18
3/4	HABU-12	DP12FSTH	2.47
3/4	HPBU-12	DP12FSTH	1.87
3/4	SAOR-12	DP12FSTH	2.47
3/4	SLHPBU-12	DP12FSTH	1.87
3/4	SLSPOR-12	DP12FSTH	1.87
3/4	SPOR-12	DP12FSTH	1.87
1	HABU-16	DP16FSTH	2.18
1	HPBU-16	DP16FSTH	2.18
1	SAOR-16	DP16FSTH	2.18
1	SLHPBU-16	DP16FSTH	2.18
1	SLSPOR-16	DP16FSTH	2.18
1	SPOR-16	DP16FSTH	2.18

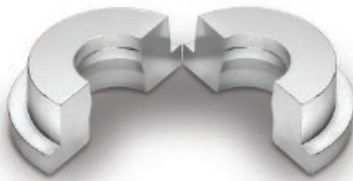
NOTE: THE USE OF FITTINGS AND ASSEMBLY TOOLING OTHER THAN THAT SUPPLIED BY PIRANHA HOSE PRODUCTS IS AT THE RISK AND LIABILITY OF THE USER.





HOSE PRODUCTS, INC.
A Kuriyama Group Company

NOTE: THE USE OF FITTINGS AND ASSEMBLY TOOLING OTHER THAN THAT SUPPLIED BY PIRANHA HOSE PRODUCTS IS AT THE RISK AND LIABILITY OF THE USER.



DIES

Hose ID (in)	Use With Hose Series	Dies Part Number	Weight (lbs/each)
1/8	LLGR-02	DS02TH	3.81
1/8	SLGR-02	DS02TH	3.81
3/16	LLGR-03	DS03TH	3.81
3/16	SLGR-03	DS03TH	3.81
1/4	LLGR-04	DS04TH	3.81
1/4	SLGR-04	DS04TH	3.81
1/4	LLRD-04	DS04TH	3.81
1/4	SLRD-04	DS04TH	3.81
3/8	SLGR-06	DS06TH	3.81
3/8	LLGR-06	DS06TH	3.81
1/2	LAGR-08	DSAR08TH	3.60
1/2	LHBK-08	DS08TH	3.72
1/2	LLBU-08	DS08TH	3.72
1/2	LLGR-08	DS08TH	3.72
1/2	LLRD-08	DS08TH	3.72
1/2	SHBK-08	DSSHPO8TH	2.15
1/2	SLBU-08	DS08TH	3.72
1/2	SLGR-08	DS08TH	3.72
1/2	SLHKBK-08	DS08TH	3.72
1/2	SLRD-08	DS08TH	3.72
1/2	SLSHBK-08	DSSHPO8TH	2.15
5/8	SHBK-10	DSAR08TH	2.18
5/8	SLSHBK-10	DSAR08TH	2.18
5/8	SLSPOR-10	DS10TH	3.61
5/8	SPOR-10	DS10TH	3.61
3/4	HABU-12	DSAR12TH	3.35
3/4	HPBU-12	DS12TH	3.45
3/4	SAOR-12	DSAR12TH	3.35
3/4	SLHPBU-12	DS12TH	3.45
3/4	SLSPOR-12	DS12TH	3.45
3/4	SPOR-12	DS12TH	3.45
1	HABU-16	DSAR16TH	3.08
1	HPBU-16	DS16TH	3.21
1	SAOR-16	DSAR16TH	3.08
1	SLHPBU-16	DS16TH	3.21
1	SLSPOR-16	DS16TH	3.21
1	SPOR-16	DS16TH	3.21
1 1/4	SAOR-20	DSAR20TH	2.67
1 1/4	SLSPOR-20	DS20TH	2.83
1 1/4	SPOR-20	DS20TH	2.83





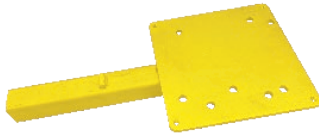
NEW! **PHP-110 Hand Operated Hydraulic Swaging Machine**

Part Number	Description	Weight (lbs/each)
SWAGE-HYDTH	HYD SWAGER	86.00



NEW! **Horizontal Swage Tool**

Part Number	Description	Weight (lbs/each)
SWAGE-HANDTH	HORIZNTL SWAGER	15.00



NEW! **Swage Hitch Mounting Plate for use with all Piranha Swaging Equipment**

Part Number	Description	Weight (lbs/each)
PHPSWAGE-MPTH	MOUNTING PLATE	17.00



NEW! **PHP-50 Mini Hydraulic Swaging Machine**

Part Number	Description	Weight (lbs/each)
SWAGE-LLTH	MINI HYD SWAGER	31

NOTE: THE USE OF FITTINGS AND ASSEMBLY TOOLING OTHER THAN THAT SUPPLIED BY PIRANHA HOSE PRODUCTS IS AT THE RISK AND LIABILITY OF THE USER.

NEW! **PHP-50 Swage Mini - Horizontal Swage Tool - Male Pusher**

Hose ID (in)	Use With Hose Series	Male Pusher Part Number	Die Set Required	Weight (lbs/each)
1/8	LLGR, SLGR -2	PHP50-02M	DS02TH	1.50
3/16	LLGR, SLGR -3	PHP50-02M or PHP50-04M	DS03TH	1.50
1/4	LLGR, SLGR-4	PHP50-04M	DS04TH	1.50
1/4	LLRD, SLRD -4	PHP50-04M	DS04TH	1.50
3/8	LLGR, SLGR-6	PHP50-06M	DS06TH	1.50
3/8	LLRD, SLRD-6	PHP50-06M	DS065TH	1.50
1/2	LAGR-8	PHP50-08M	DSAR08TH	1.50
1/2	LHBK, SLLHBK-8	PHP50-08M	DS08TH	1.50
1/2	LLBU, SLBU-8	PHP50-08M	DS08TH	1.50
1/2	LLGR, SLGR -8	PHP50-08M	DS08TH	1.50
1/2	LLRD, SLRD-8	PHP50-08M	DS08TH	1.50
1/2	SHBK, SLSHBK-8	PHP50-08M	DSSHP08TH	1.50



NOTE: ONE DIE SET AND A PUSHER ARE REQUIRED TO REPAIR AN END FITTING.

NOTE: THE USE OF FITTINGS AND ASSEMBLY TOOLING OTHER THAN THAT SUPPLIED BY PIRANHA HOSE PRODUCTS IS AT THE RISK AND LIABILITY OF THE USER.

NEW! **PHP-50 Swage Mini - Horizontal Swage Tool - Female Pusher**

Hose ID (in)	Use With Hose Series	Female Pusher Part Number	Die Set Required	Weight (lbs/each)
1/8	LLGR, SLGR -2	N/A	DS02TH	1.50
3/16	LLGR, SLGR -3	PHP50-02FS or PHP50-04FS	DS03TH	1.50
1/4	LLGR, SLGR-4	PHP50-04FS	DS04TH	1.50
1/4	LLRD, SLRD -4	PHP50-04FS	DS04TH	1.50
3/8	LLGR, SLGR-6	PHP50-06FS	DS06TH	1.50
3/8	LLRD, SLRD-6	PHP50-06FS	DS065TH	1.50
1/2	LAGR-8	PHP50-08FS	DSAR08TH	1.50
1/2	LHBK, SLLHBK-8	PHP50-08FS	DS08TH	1.50
1/2	LLBU, SLBU-8	PHP50-08FS	DS08TH	1.50
1/2	LLGR, SLGR -8	PHP50-08FS	DS08TH	1.50
1/2	LLRD, SLRD-8	PHP50-08FS	DS08TH	1.50
1/2	SHBK, SLSHBK-8	PHP50-08FS	DSSHP08TH	1.50

NEW! **PHP-50 Swage Mini - Horizontal Swage Tool - Male Swivel Pusher**

Hose ID (in)	Use With Hose Series	Male Swivel Pusher Part Number	Die Set Required	Weight (lbs/each)
1/8	LLGR, SLGR -2	NA	DS02TH	1.50
3/16	LLGR, SLGR -3	N/A	DS03TH	1.50
1/4	LLGR, SLGR-4	PHP50-04MS	DS04TH	1.50
1/4	LLRD, SLRD -4	PHP50-04MS	DS04TH	1.50
3/8	LLGR, SLGR-6	PHP50-06MS	DS06TH	1.50
3/8	LLRD, SLRD-6	PHP50-06MS	DS065TH	1.50
1/2	LAGR-8	PHP50-08MS	DSAR08TH	1.50
1/2	LHBK, SLLHBK-8	PHP50-08MS	DS08TH	1.50
1/2	LLBU, SLBU-8	PHP50-08MS	DS08TH	1.50
1/2	LLGR, SLGR -8	PHP50-08MS	DS08TH	1.50
1/2	LLRD, SLRD-8	PHP50-08MS	DS08TH	1.50
1/2	SHBK, SLSHBK-8	PHP50-08MS	DSSHP08TH	1.50